

4 x 4cm
test
square

Cycling cap pattern

sizes 56, 58, 60cm
1cm seam allowance included



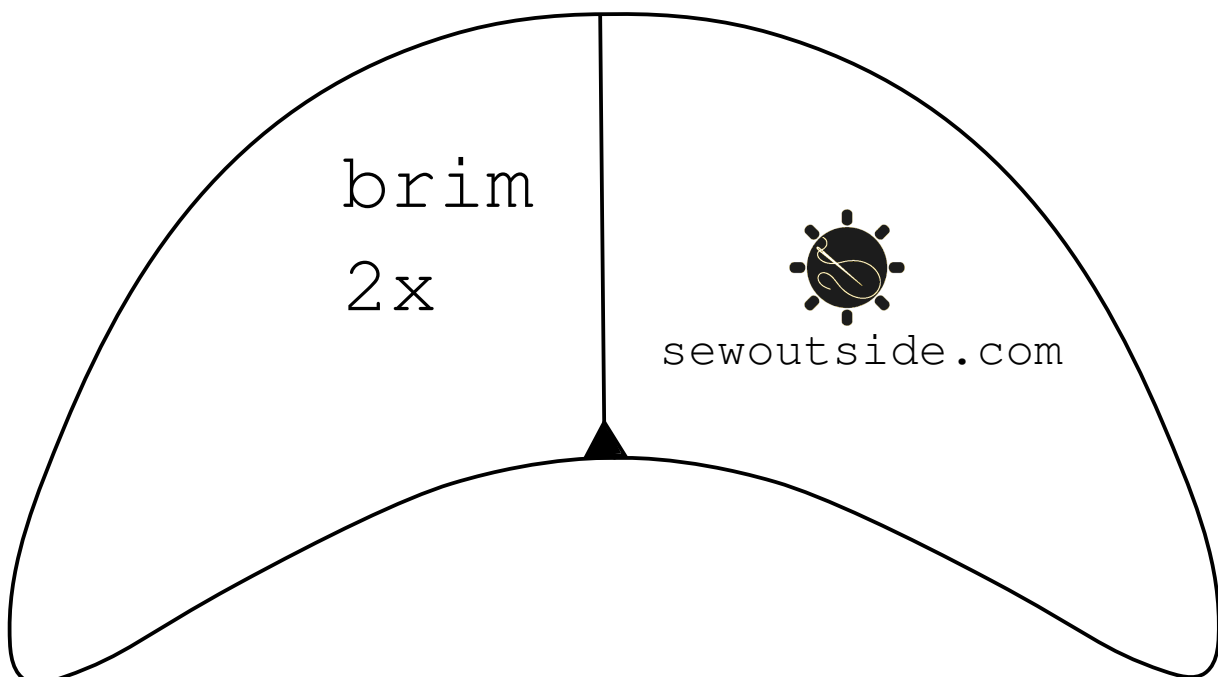
sewoutside.com

needed:

- fabric, not much. cotton is best
- 5cm elastic cord
- 70cm twill tape
- interfacing for brim (optional)

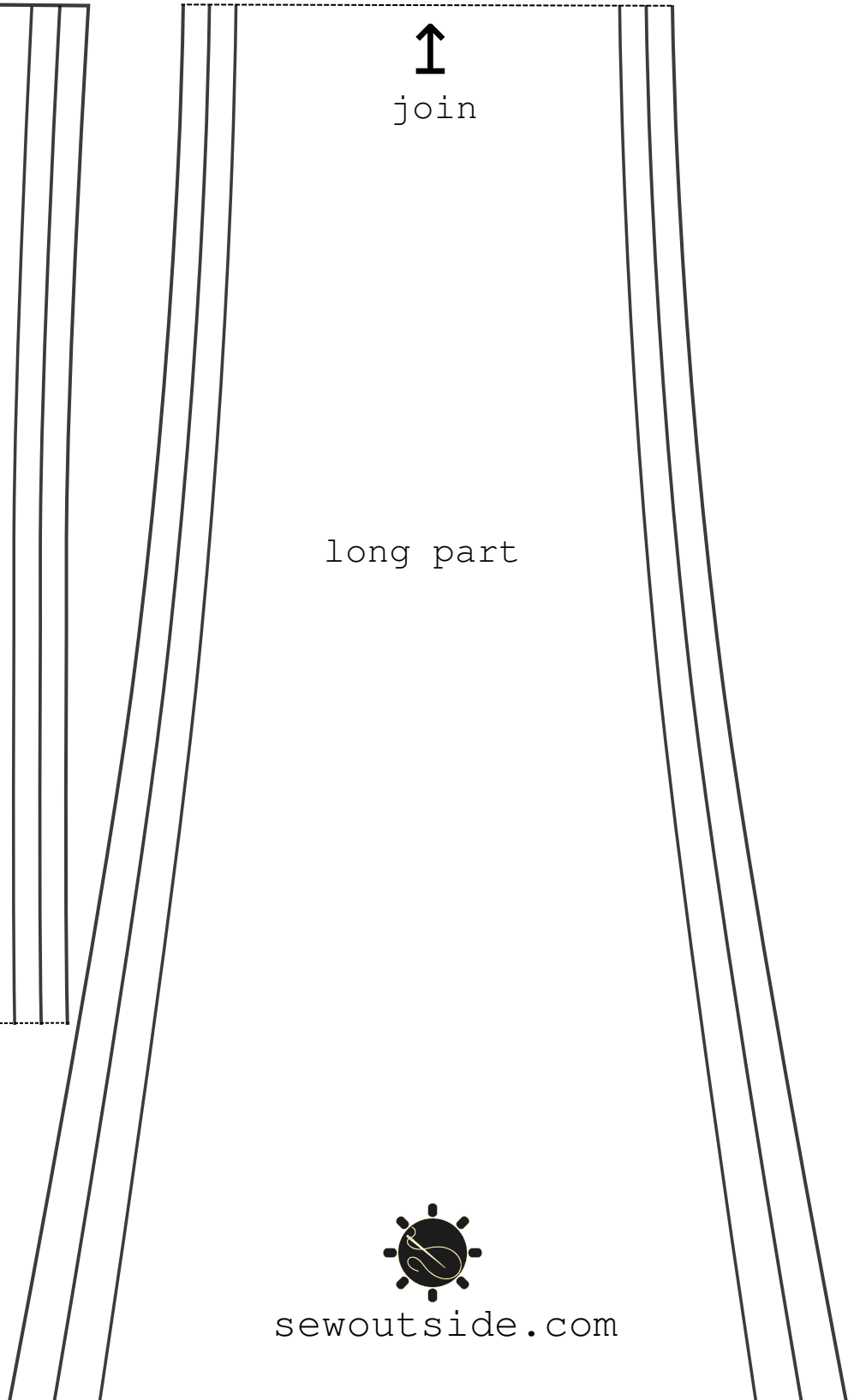
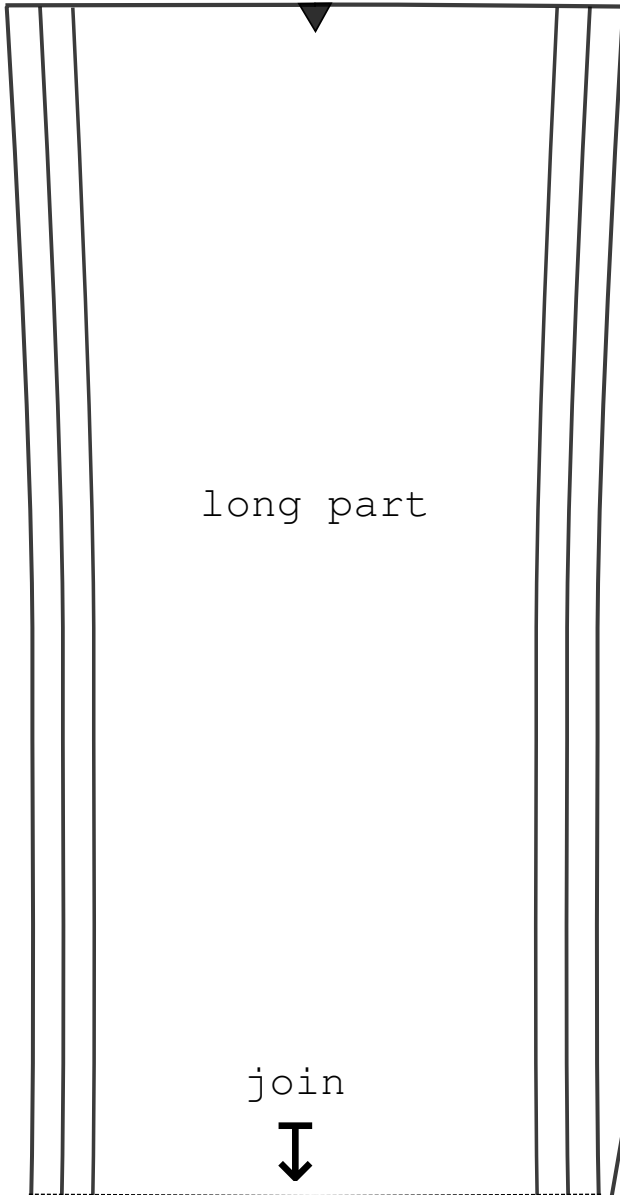
instructions:

- cut out pattern pieces
- sew up darts on side pieces
- join side pieces to long strip
- interface wrong side of one brim piece (optional)
- sew brim pieces right sides together, turn and press
- attach brim to cap with right sides together
- attach elastic cord to back of cap, within the seam allowance
- sew twill tape to right side of cap bottom edge
- press twill tape to wrong side and sew top edge of tape to cap, enclosing raw edge



4 x 4cm
test
square

56, 58, 60 cm sizes



4 x 4cm
test
square

side
piece
2x

Back

sewoutside.com



Front

